



CETOP 3 DIRECTIONAL CONTROL VALVES

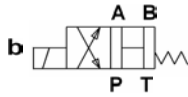


Features on Valves Include

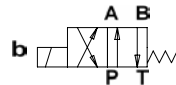
Maximum Flow Rate 80 L/min

Maximum Pressure 350 Bar

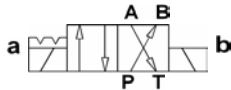
Viton Seals as Standard



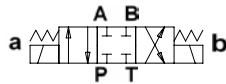
Item No	Part No	Price £
5046690	DG4V 3 0B M U A6 60 (110V AC)	89.00
5046659	DG4V 3 0B M U H7 60 (24V DC)	89.00
*** 5058468	DG4V 3 0B H M U G7 60 (12V DC)	89.00
*** 5047085	DG4V 3 0B H M U H7 60 (24V DC)	89.00



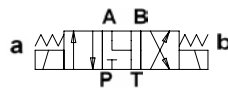
Item No	Part No	Price £
5043825	DG4V 3 2A M U A6 60 (110V AC)	89.00
5043824	DG4V 3 2A M U H7 60 (24V DC)	89.00
*** 5057849	DG4V 3 2A H M U B6 60 (110/120V AC 50/60)	89.00
*** 5057852	DG4V 3 2A H M U D6 60 (220/240V AC 50/60)	89.00
*** 5058308	DG4V 3 2A H M U G7 60 (12V DC)	89.00
*** 5047019	DG4V 3 2A H M U H7 60 (24V DC)	89.00



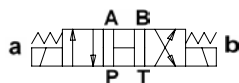
Item No	Part No	Price £
5043827	DG4V 3 2N M U A6 60 (110V AC)	122.00
5043826	DG4V 3 2N M U H7 60 (24V DC)	122.00
*** 5059226	DG4V 3 2N H M U B6 60 (110/120V AC 50/60)	122.00
*** 5049380	DG4V 3 2N H M U H7 60 (24V DC)	122.00



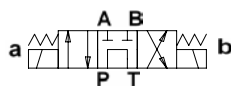
Item No	Part No	Price £
5043823	DG4V 3 2C M U A6 60 (110V AC)	112.50
5043822	DG4V 3 2C M U H7 60 (24V DC)	112.50
*** 5049845	DG4V 3 2C H M U B6 60 (110/120V AC 50/60)	112.50
*** 5057850	DG4V 3 2C H M U D6 60 (220/240V AC 50/60)	112.50
*** 5057629	DG4V 3 2C H M U G7 60 (12V DC)	112.50
*** 5049283	DG4V 3 2C H M U H7 60 (24V DC)	112.50



Item No	Part No	Price £
5046675	DG4V 3 6C M U A6 60 (110V AC)	112.50
5044033	DG4V 3 6C M U H7 60 (24V DC)	112.50
*** 5029053	DG4V 3 6C H M U B6 60 (110/120V AC 50/60)	112.50
*** 5057630	DG4V 3 6C H M U G7 60 (12V DC)	112.50
*** 5046971	DG4V 3 6C H M U H7 60 (24V DC)	112.50



Item No	Part No	Price £
5046692	DG4V 3 0C M U A6 60 (110V AC)	112.50
5046661	DG4V 3 0C M U H7 60 (24V DC)	112.50
*** 5053162	DG4V 3 0C H M U B6 60 (110/120V AC 50/60)	112.50
*** 5057628	DG4V 3 0C H M U G7 60 (12V DC)	112.50
*** 5046972	DG4V 3 0C H M U H7 60 (24V DC)	112.50



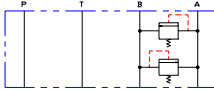
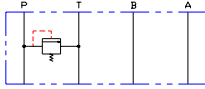
Item No	Part No	Price £
5029025	DG4V 3 8C VM U A6 61 (110V AC)	122.00
5029027	DG4V 3 8C VM U H7 61 (24V DC)	122.00
*** 5057851	DG4V 3 8C H VM U B6 61 (110/120V AC 50/60)	122.00
*** 5060220	DG4V 3 8C H VM U D6 61 (220/240V AC 50/60)	122.00
*** 5057631	DG4V 3 8C H VM U G7 61 (12V DC)	122.00
*** 5029728	DG4V 3 8C H VM U H7 61 (24V DC)	122.00

NOTE *** Valve fitted with Waterproof Over-Ride (Suitable for Mobile Applications)



CETOP 3 MODULES

Pressure Relief Module



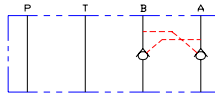
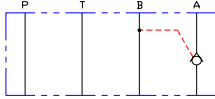
Features on Modules Include

Maximum Flow Rate 60 L/min
 Maximum Pressure 315 Bar
 Viton Seals as Standard

Item No	Part No	Price £
5045274	DGMC 3 PT CW 41 (10-200 Bar)	89.00
5046952	DGMC 3 PT GW 41 (50-315 Bar)	89.00

Item No	Part No	Price £
5046948	DGM2 3 AB CW BA CW 41 (10-200 Bar)	148.00

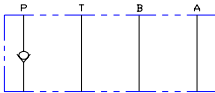
Pilot Operated Check Module



Item No	Part No	Price £
5046992	DGMPC 3 ABK 41 (Single)	80.00

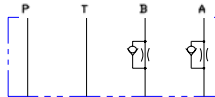
Item No	Part No	Price £
5045267	DGMPC 3 ABK BAK 41 (Double)	89.00

Direct Operated Check Module



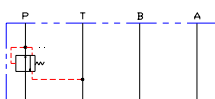
Item No	Part No	Price £
5045272	DGMDC 3 Y PK 41	54.00

Flow Control Module



Item No	Part No	Price £
5045271	DGMFN 3 X A2W B2W 41 (Meter In)	71.00
5045269	DGMFN 3 Y A2W B2W 41 (Meter Out)	71.00

Pressure Reducing Module



Item No	Part No	Price £
5046997	DGMX2 3 PP BW B 40 (3.5-70 Bar)	121.50
5046999	DGMX2 3 PP FW B 40 (20-250 Bar)	121.50



CETOP 5 DIRECTIONAL CONTROL VALVES

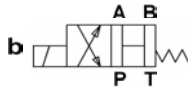


Features on Valves Include

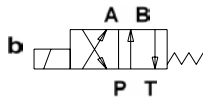
Maximum Flow Rate 120 L/min (Dependant on Spool)

Maximum Pressure 315 Bar

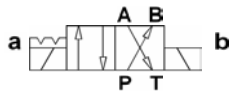
Viton Seals as Standard



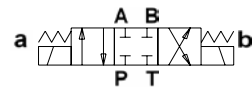
Item No	Part No	Price £
5042874	DG4V 5 0B M U A6 20 (110V AC)	142.00
5042884	DG4V 5 0BJ M U H6 20 (24V DC)	142.00



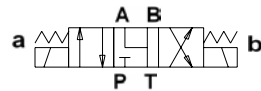
Item No	Part No	Price £
5044769	DG4V 5 2A M U A6 20 (110V AC)	142.00
5044768	DG4V 5 2AJ M U H6 20 (24V DC)	142.00
*** 5043819	DG4V 5 2AJ H M U H6 20 (24V DC)	142.00



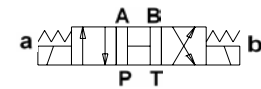
Item No	Part No	Price £
5044774	DG4V 5 2N M U A6 20 (110V AC)	204.50
5044773	DG4V 5 2NJ M U H6 20 (24V DC)	204.50



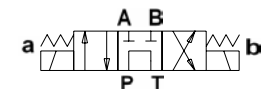
Item No	Part No	Price £
5044777	DG4V 5 2C M U A6 20 (110V AC)	192.50
5044776	DG4V 5 2CJ M U H6 20 (24V DC)	192.50
*** 5048213	DG4V 5 2C H M U A6 20 (110V AC)	192.50
*** 5048484	DG4V 5 2CJ H M U H6 20 (24V DC)	192.50



Item No	Part No	Price £
5044781	DG4V 5 6C M U A6 20 (110V AC)	192.50
5044780	DG4V 5 6CJ M U H6 20 (24V DC)	192.50
*** 5046721	DG4V 5 6C H M U A6 20 (110V AC)	192.50
*** 5059236	DG4V 5 6C H M U C6 20 (220V AC)	192.50
*** 5059237	DG4V 5 6CJ H M U H6 20 (24V DC)	192.50



Item No	Part No	Price £
5044789	DG4V 5 0C M U A6 20 (110V AC)	192.50
5044788	DG4V 5 0CJ M U H6 20 (24V DC)	192.50
*** 5059230	DG4V 5 0C H M U A6 20 (110V AC)	192.50
*** 5059232	DG4V 5 0C H M U C6 20 (220V AC)	192.50
*** 5059234	DG4V 5 0CJ H M U H6 20 (24V DC)	192.50



Item No	Part No	Price £
5044785	DG4V 5 8CJ VM U A6 20 (110V AC)	219.50
5044784	DG4V 5 8CJ VM U H6 20 (24V DC)	219.50
*** 5059831	DG4V 5 8CJ H VM U A6 20 (110V AC)	219.50
*** 5059830	DG4V 5 8CJ H VM U H6 20 (24V DC)	219.50

NOTE *** Valve fitted with Waterproof Over-Ride (Suitable for Mobile Applications)

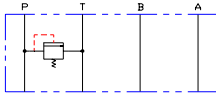


CETOP 5 MODULES

Features on Modules Include

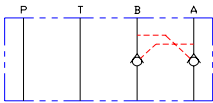
Maximum Flow Rate 120 L/min
 Maximum Pressure 315 Bar
 Viton Seals as Standard

Pressure Relief Module



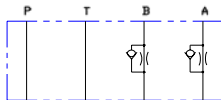
Item No	Part No	Price £
5046910	DGMC 5 PT GW B 30 (4-315 Bar)	158.50

Pilot Operated Check Module



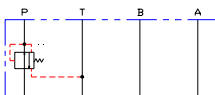
Item No	Part No	Price £
5046894	DGMPC 5 ABK BAK 30	143.50

Flow Control Module



Item No	Part No	Price £
5046883	DGMFN 5 Y A2W B2W 30 (Meter Out)	113.50

Pressure Reducing Module



Item No	Part No	Price £
5047298	DGMX2 5 PP FW B 30 (3.5-200 Bar)	179.50
5047282	DGMX2 5 PP GH B 30 (8.5-315 Bar)	221.50



CETOP 3 ANCILLARY ITEMS

Cetop 3 Manifold Blocks

Side Ported - Cast Iron (Phosphated) 300 Bar Rated
P&T Ports - 1/2"BSP, A&B Ports - 3/8"BSP



	Item No	Part No	Price £
1 Station	5016380	MR3-1G	38.00
2 Station	5016382	MR3-2G	51.00
3 Station	5016385	MR3-3G	66.00
4 Station	5016387	MR3-4G	81.00
5 Station	5016388	MR3-5G	100.00
6 Station	5016390	MR3-6G	121.00

Side Ported - Aluminium 300 Bar Rated
P&T Ports - 1/2"BSP, A&B Ports - 3/8"BSP



	Item No	Part No	Price £
1 Station	5061576	MR3-1G/ALU	41.50
2 Station	5061577	MR3-2G/ALU	56.50
3 Station	5061578	MR3-3G/ALU	73.50
4 Station	5061579	MR3-4G/ALU	89.00
5 Station	5061580	MR3-5G/ALU	109.50
6 Station	5061581	MR3-6G/ALU	132.00

Cetop 3 Ancillary Plates



	Item No	Part No	Price £
Subplate 3/8"BSP	5016195	MRSL3-3/8"	29.00
Blanking Plate	5016365	MRF3	20.00
Cross Over Plate P-A	5016354	MRC3-PA	28.50
Cross Over Plate P-B	5016353	MRC3-PB	28.50
Tapping Plate A&B Ports	5016376	MRP3AB-1/4"G	26.50
Tapping Plate P Port	5016375	MRP3P-1/4"G	26.50
Cetop 3-5 Adaptor Plate	5042474	DGAM 3 01 10R	70.00

Cetop 3 Bolt Kits



	Item No	Part No	Price £
M5 x 30mm Long	5044756	BK 616452M	1.00
M5 x 50mm Long	5039749	BKDG 3699M	1.50
M5 x 60mm Long	5016725	BK 466836M	1.50
M5 x 70mm Long	5042969	BK 464125M	2.00
M5 x 80mm Long	5043118	BK 466837M	2.00
M5 x 90mm Long	5043119	BK 466838M	3.00
M5 x 100mm Long	5043120	BK 466839M	4.00
M5 x 110mm Long	5043121	BK 466840M	4.00
M5 x 120mm Long	5043122	BK 466841M	5.00
M5 x 130mm Long	5016712	BK 466842M	5.00
M5 x 140mm Long	5016713	BK 466843M	8.00
M5 x 150mm Long	5043123	BK 466844M	14.50
M5 x 160mm Long	5043124	BK 466845M	16.00
M5 x 170mm Long	5043125	BK 466846M	17.50



CETOP 5 ANCILLARY ITEMS

Cetop 5 Manifold Blocks

Side Ported - Cast Iron (Phosphated) 300 Bar Rated
 P Port - 3/4"BSP, T Port - 1"BSP, A&B Ports - 1/2"BSP



1 Station
 2 Station
 3 Station
 4 Station
 5 Station
 6 Station

Item No	Part No	Price £
5016396	MR5-1G	56.50
5016398	MR5-2G	72.00
5016400	MR5-3G	92.50
5055636	MR5-4G	121.00
5016404	MR5-5G	145.50
5016406	MR5-6G	181.50

Cetop 5 Ancillary Plates



Blanking Plate
 Cross Over Plate P-A
 Cross Over Plate P-B
 Tapping Plate A&B Ports
 Tapping Plate P Port

Item No	Part No	Price £
5056724	MRF5	24.50
5060049	MRC5-PA	39.50
5060050	MRC5-PB	39.50
5016377	MRP5AB-1/4"G	38.00
5060051	MRP5P-1/4"G	38.00

Cetop 5 Bolt Kits



M6 x 40mm Long
 M6 x 50mm Long
 M6 x 65mm Long
 M6 x 70mm Long
 M6 x 90mm Long
 M6 x 100mm Long
 M6 x 110mm Long
 M6 x 120mm Long

Item No	Part No	Price £
5050507	BKDG 01633M	2.00
5043915	BK 534570M	2.00
5016745	BK 534572M	2.00
5043916	BK 534573M	2.00
5016747	BK 534576M	2.50
5048023	BK 978479M	4.00
5048024	BK 978480M	4.00
5043917	BK 534581M	8.00



CETOP 3 & 5 SPARE PARTS

Solenoid Coils

To Suit DG4V 3 Valves



		Item No	Part No	Price £
A	110V AC - 50Hz	5043618	507825	23.00
C	220V AC - 50Hz	5043619	507826	23.00
G	12V DC - 50Hz	5043624	507847	23.00
H	24V DC - 50Hz	5043625	507848	23.00
B	110/120V AC - 50/60Hz	5043622	507833	47.50
ED	240V AC - 50Hz	5043620	507827	47.50
D	220/240V AC - 50/60Hz	5043623	507834	47.50

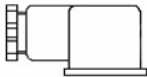
To Suit DG4V 5 Valves



		Item No	Part No	Price £
A	110V AC - 50Hz	5044829	617475	33.00
C	220V AC - 50Hz	5044830	617476	33.00
G	12V DC - 50Hz	5044827	617470	33.00
H	24V DC - 50Hz	5044828	617471	33.00
ED	240V AC - 50Hz	5044831	617477	70.00
EK	115V AC - 60Hz	5044832	617499	70.00
P	110v DC - 50Hz	5042843	457911	70.00

Hirschman Plugs

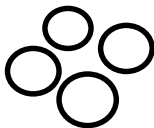
DIN43650



		Item No	Part No	Price £
	Black (without lights)	5045654	710775	4.00
	Grey (without lights)	5045655	710776	4.00

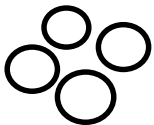
Seal Kits

Cetop 3 Modules



		Item No	Part No	Price £
	DG4V 3 "U" type	5046653	858995	12.50
	DGMC 3 * * * 41	5047075	870738	12.50
	DGMC2 3 * * * 41	5047074	870737	12.50
	DGMDC 3 * * * 41	5047072	870708	12.50
	DGMFN 3 * * * 41	5047071	870707	12.50

Cetop 5 Modules



		Item No	Part No	Price £
	DG4V 5 (AC Voltage)	5042861	459057	12.50
	DG4V 5 (DC Voltage)	5042862	459058	12.50
	DGM* 5 * * 30	5047269	878290	16.50