

### Technical specifications

Material	: Cast iron EN-GJS-400-15 _ Phosphatation
Pressure	: 300 bar maxi
Flow rate	: 60 L/mn maxi (3/8" BSP) 80 L/mn maxi (1/2" BSP)

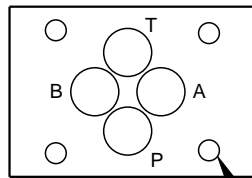
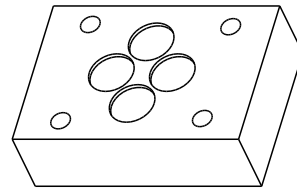
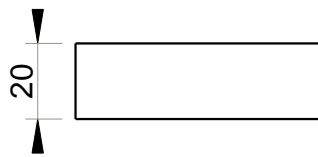
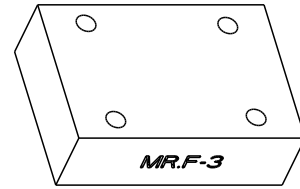
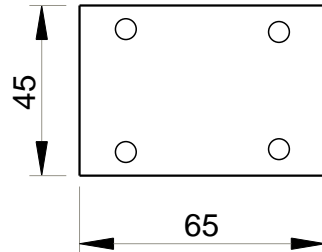
Designation code :

**MR . S . L - 3 - \* G**

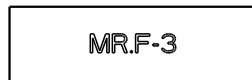
MECABOR  
Subplate  
Side entry  
CETOP 3

G : ports BSP

3/8"  
1/2"



4 x Ø5.5



MR.F-3



### Technical specifications

Material : Steel 1.0736 \_ Phosphatation  
 Pressure : 300 bar maxi  
 Weight : 0.46 kg  
 Supplied with seals and screws

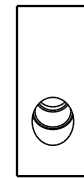
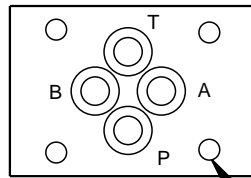
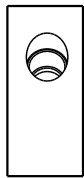
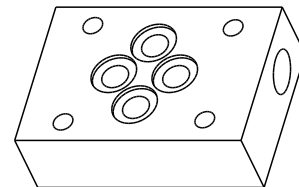
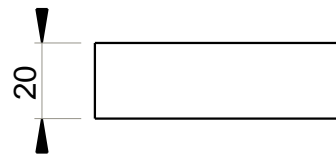
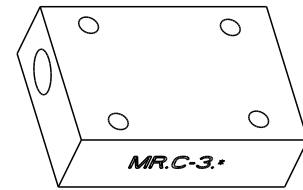
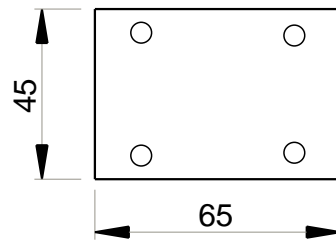
Designation code :

**MR . F - 3**

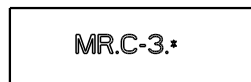
MECABOR

Blanking plate

CETOP 3



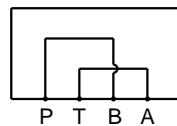
4 x Ø5.5



MR.C-3.PA



MR.C-3.PB



### Technical specifications

Material : Steel 1.0736 \_ Phosphatation  
 Pressure : 300 bar maxi  
 Weight : 0.40 kg  
 Supplied with seals

Designation code :

**MR . C - 3 . \***

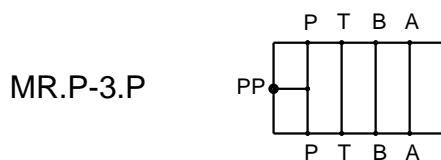
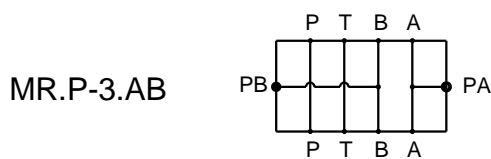
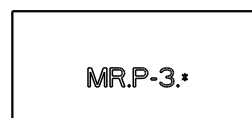
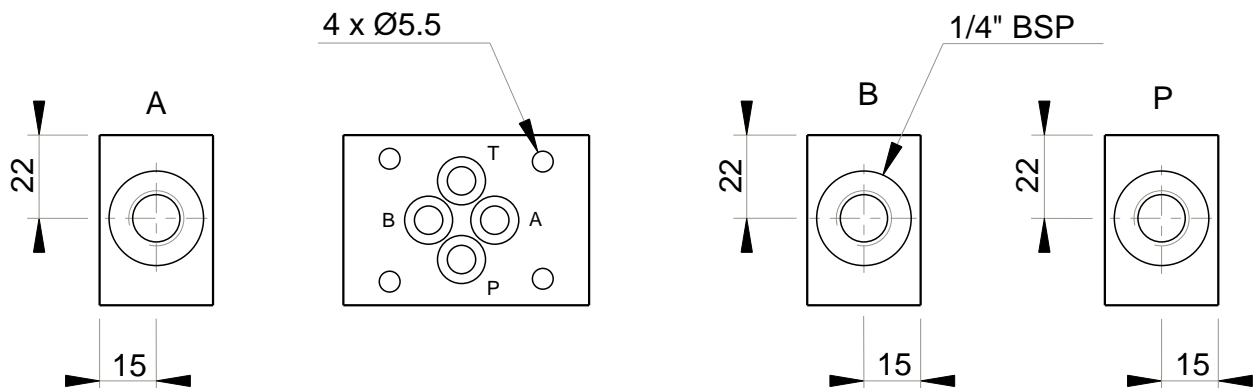
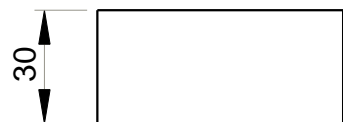
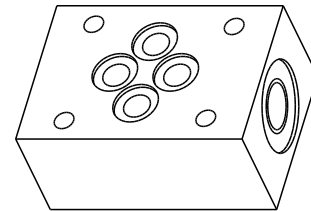
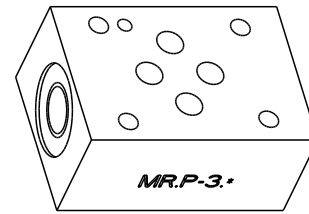
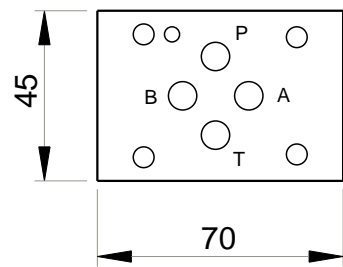
MECABOR

Crossover plate

CETOP 3

PA = P - A  
 T - B

PB = P - B  
 T - A



### Technical specifications

Material	: Steel 1.0736 _ Phosphatation
Pressure	: 300 bar maxi
Weight	: 0.64 kg
Supplied with seals	

Designation code : **MR . P - 3 . \* - 1/4" G**

MECABOR

Subplate with  
pressure test points

CETOP 3

G : ports BSP

P = pressure test point on P  
AB = pressure test points  
on A and B

## Installation Dimensions in mm (inches) (Size 03)

### DGAM-3-01-1\*-R (Metric Bolt Tappings)

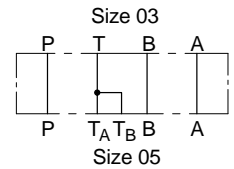
### DGAM-3-01-1\* (UNC Bolt Tappings)

### Adaptors, Size 05 to 03

### For pressures up to 210 bar (3000 psi)

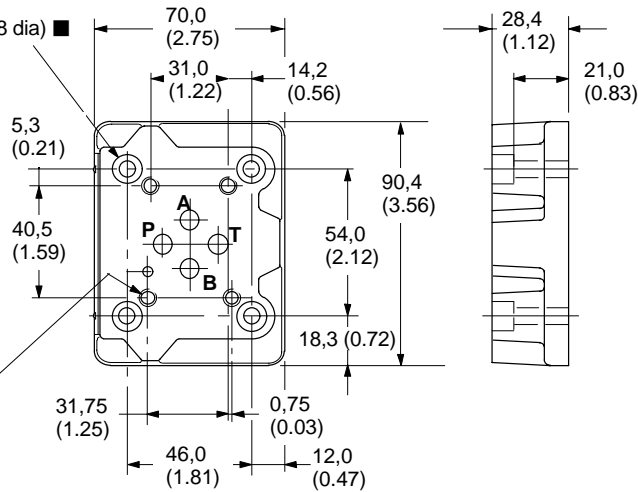
Size 3 valves can frequently be used in place of size 5 valves, typically for pilot control functions, or generally where system flow rate is within that of the size 3 valves.

The DGAM-3-01 adaptor bolts to an existing size 05 interface and provides a size 03 mounting face for the smaller valve.



4 holes  $\varnothing$  7,1 (0.281 dia),

counterbored  $\varnothing$  11,1 (0.438 dia)

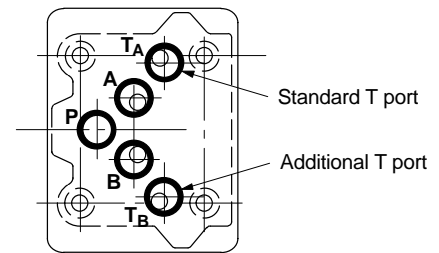


4 holes tapped:

For DGAM-3-01-1\*-R, M5-6H x 12 (0.47) deep

For DGAM-3-01-1\*, #10-24 UNC-2B x 12,7 (0.5) deep

### Size 03 Mounting Surface



### Size 05 Mounting Surface

Seals included

n Supplied complete with bolts for mounting to size 05 interface:

M6 bolts with type DGAM-3-01-1\*-R

$\frac{1}{4}$ "-20 UNC bolts with type DGAM-3-01-1\*.