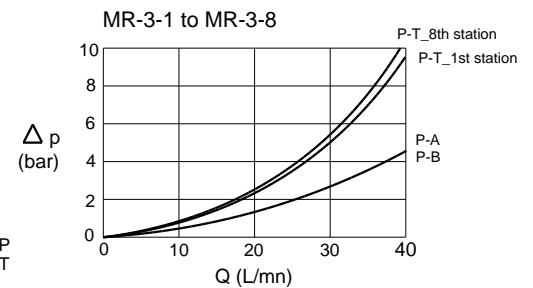
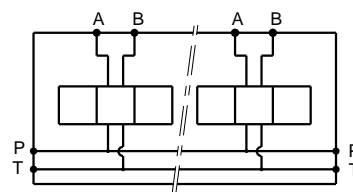


Stations	X	Y	(kg)
1	70	58	2.10
2	120	108	3.60
3	170	158	5.20
4	220	208	6.70
5	270	258	8.30
6	320	308	9.80
7	370	358	11.40
8	420	408	13.00



Technical specifications

Material : Cast iron EN-GJL-250 _ Phosphatation
 Pressure : 300 bar maxi
 Flow rate : 40 L/mn maxi
 Options : P and/or T not drilled through
 zinc plating
 to 12 stations

Designation code :

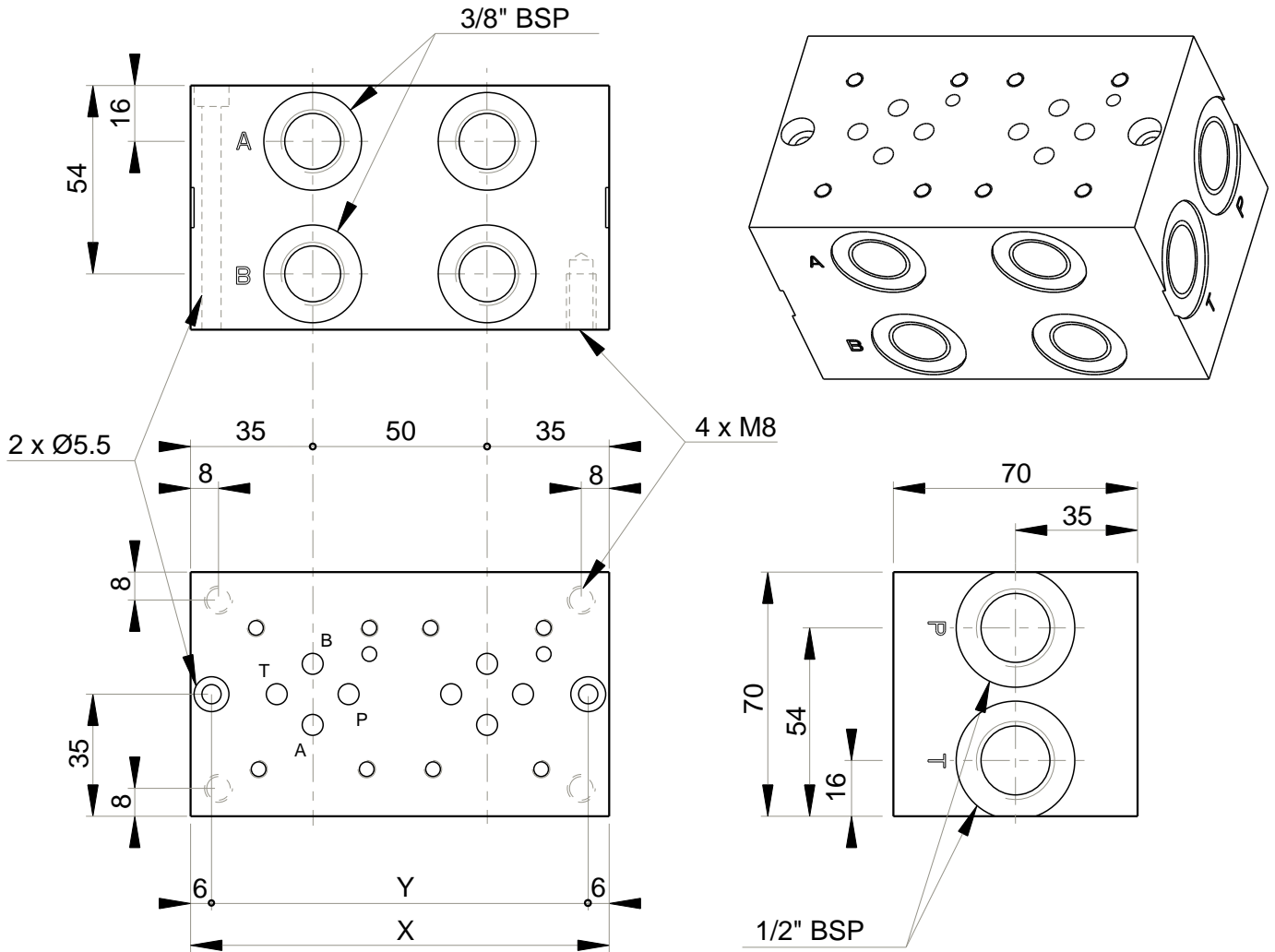
MR - 3 - * . G

MECABOR

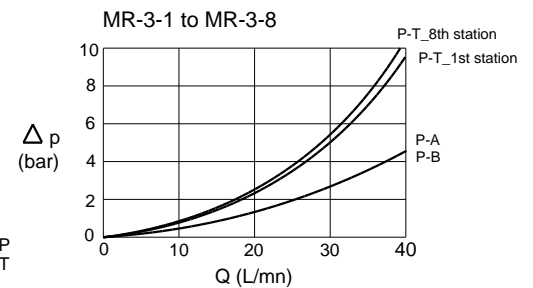
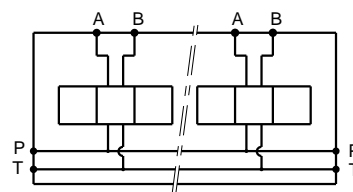
CETOP 3
Side entry

Station number

G : ports BSP



Stations	X	Y	(kg)
1	70	58	2.10
2	120	108	3.60
3	170	158	5.20
4	220	208	6.70
5	270	258	8.30
6	320	308	9.80
7	370	358	11.40
8	420	408	13.00



Technical specifications

Material : Aluminium
 Pressure : 250 bar max
 Flow rate : 40 L/mn max

Designation code :

MR - 3 - * . G

MECABOR

CETOP 3
 Side entry

Station number

G : ports BSP