



## PGP-ALPA2 Gear Pumps (Front)

### Benefits

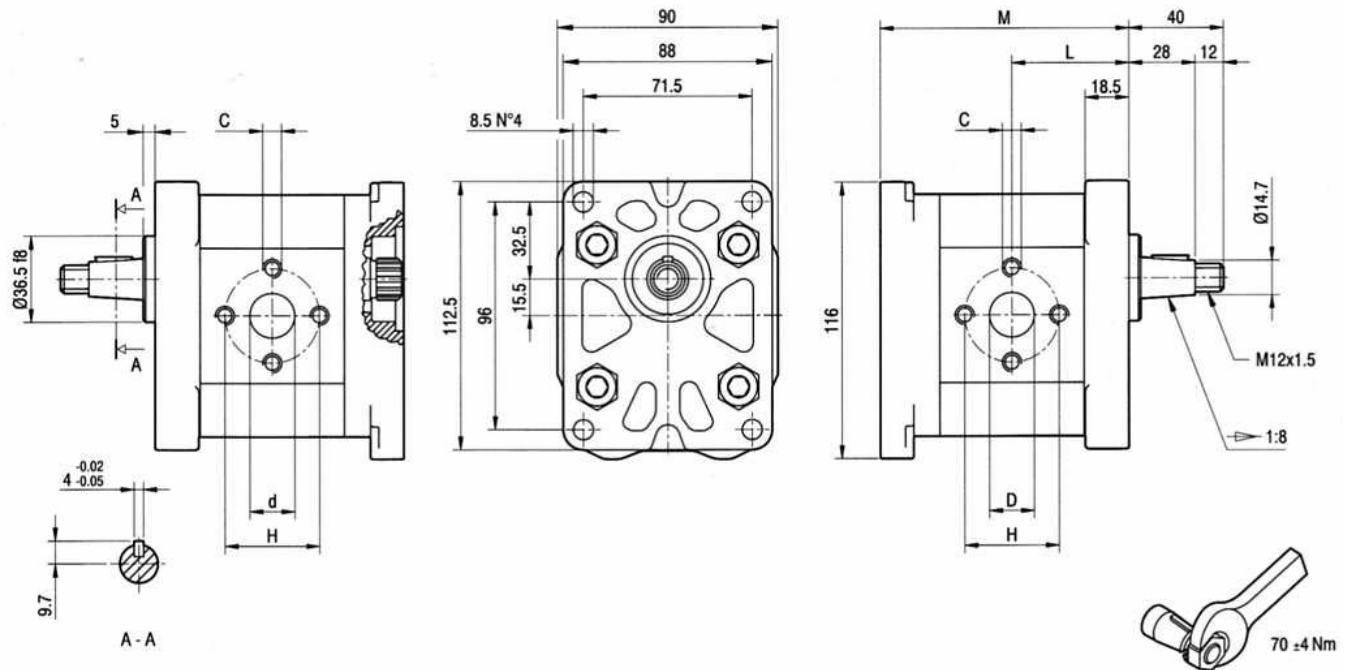
- Available in cast iron ends which allow higher pressure ratings.
- Flexible construction giving range of options in single and multiple sections.
- Standard European mounting and shafts available.
- Port adaptors to fit most applications.

### Features

- Displacement range 4.5cc to 16cc/rev
- Pressure up to 250 bar
- Speeds up to 4000rpm
- 4 Bolt Mount
- 1:8 Taper Shaft
- Clockwise Rotation

OUTLET

INLET



Primary Item No	Disp cc/rev	Flow LPM @ 1500rpm	Part No	L mm	M mm	d mm	D mm	C	H mm	Max Speed RPM	Max WP Bar
5063538	4,5	6,4	PGP-ALPA2D6	45,5	97	13	13	M6	30	4000	250
5064572	6,4	9,1	PGP-ALPA2D9	47	100	13	13	M6	30	4000	250
5064573	8,3	11,8	PGP-ALPA2D12	48,5	103	13	13	M8	40	3500	250
5063541	9,6	13,7	PGP-ALPA2D13	49,5	105	13	13	M8	40	3000	250
5064574	11,5	16,4	PGP-ALPA2D16	51	108	13	19	M8	40	4000	230
5063543	14,1	20,1	PGP-ALPA2D20	53	112	13	19	M8	40	4000	230
5064575	16,0	22,8	PGP-ALPA2D22	54,5	115	13	19	M8	40	4000	210

### Supplied By

Primary Fluid Power Limited  
Caddick Road  
Knowsley Business Park  
L34 9HP  
Tel No. +44(0)151 632 9500  
Fax No. +44(0)151 548 9896  
[www.PrimaryFP.co.uk](http://www.PrimaryFP.co.uk)