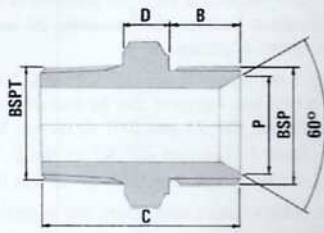


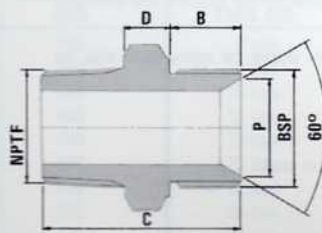
KR

'O' Ring Seal gives good resistance to Pipe Vibration, Pressure Pulsation & Temperature Cycling

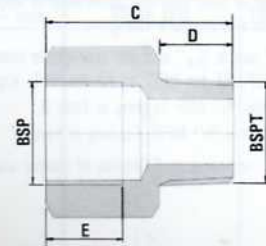
EUPT — EQUAL UNION



EUPAT — EQUAL UNION

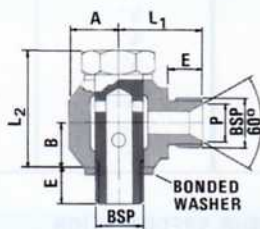


AB — ADAPTOR BUSH

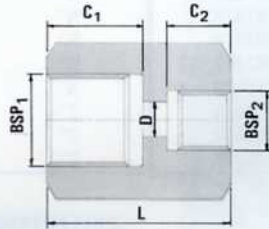


REQUIREMENT	PART No	DIMENSIONS — mm					SPANNER		REQUIREMENT	PART No	DIMENSIONS — mm					SPANNER		REQUIREMENT	PART No	DIMENSIONS — mm			SPANNER	
BSP ¹ BSP ²	IMPERIAL	B	C	D	P	A/F	A/C	BSP ¹ NPTF	IMPERIAL	B	C	D	P	A/F	A/C	BSPT BSP ²	IMPERIAL	C	D	E	A/F	A/C		
1/4" 1/4"	EUPT2	10	25	6	8	14	16.2	1/4" 1/4"	EUPAT2	10	25	6	8	14	16.2	1/4" 1/4"	AB4T-4	30	11	11	19	21.9		
1/4" 1/4"	EUPT4	11	29	6	11	19	21.9	1/4" 1/4"	EUPAT4	11	32	6	11	19	21.9	3/8" 1/4"	AB6T-4	30	13	11	19	21.9		
3/8" 3/8"	EUPT6	13	33	8	14	22	25.4	3/8" 3/8"	EUPAT6	13	35	8	14	22	25.4	3/8" 3/8"	AB6T-6	35	13	13	24	27.7		
1/2" 1/2"	EUPT8	16	40	8	18	27	31.2	1/2" 1/2"	EUPAT8	16	43	8	18	27	31.2	1/2" 1/2"	AB8T-8	43	16	16	29	33.5		
3/4" 3/4"	EUPT12	19	48	10	23	33	38.1	3/4" 3/4"	EUPAT12	19	48	10	23	33	38.1	3/4" 3/4"	AB12T-12	49	19	19	36	41.6		
1" 1"	EUPT16	21	54	11	29	41	47.4	1" 1"	EUPAT16	21	56	11	29	41	47.4	1" 1"	AB16T-16	57	22	21	46	53.1		
1 1/4" 1 1/4"	EUPT20	21	59	13	37	50	57.8								1 1/4" 1 1/4"	AB20T-20	61	25	21	55	63.5			
1 1/2" 1 1/2"	EUPT24	25	65	14	43	55	63.5								1 1/2" 1 1/2"	AB24T-24	68	25	25	60	69.3			
2" 2"	EUPT32	30	76	16	55	70	80.8								2" 2"	AB32T-32	79	30	30	80	92.4			

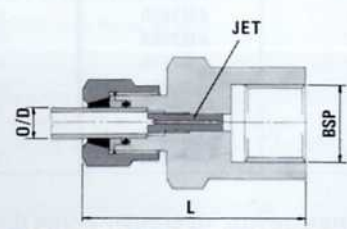
BJ — BANJO



GA — GAUGE ADAPTOR

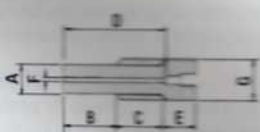


GAR — GAUGE ADAPTOR

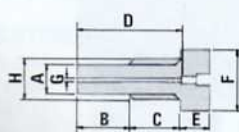


REQUIREMENT	PART No	DIMENSIONS — mm							SPANNER		REQUIREMENT	PART No	DIMENSIONS — mm				SPANNER						
BSP ¹ BSP ²	IMPERIAL	L1	L2	A	B	E	P	BOLT	A/C	BSP ¹ BSP ²	IMPERIAL	L	C1	C2	D	A/F	A/C	O/D	BSP	IMPERIAL	BODY	NUT	A/C
1/4" 1/4"	A4-4BJ	25	34	14	14	11	11	19	21.9	1/4" 1/4"	GA4-4	30	13	13	6	22	25.4	1/4" 3/8"	A4-6GAR-JET	24	16	18.5	
3/8" 3/8"	A6-6BJ	29	42	17	17	13	14	22	25.4	3/8" 1/4"	GA6-4	33	16	13	6	24	27.7						
1/2" 1/2"	A8-8BJ	37	47	21	20	16	18	27	31.2	1/2" 1/4"	GA8-4	37	19	13	6	29	33.5						
3/4" 3/4"	A12-12BJ	45	63	25	26	19	23	34	38.1														

No 2-JET — DAMPING JET



No 1-JET — DAMPING JET



BV-2 — AIR BLEED VALVES

