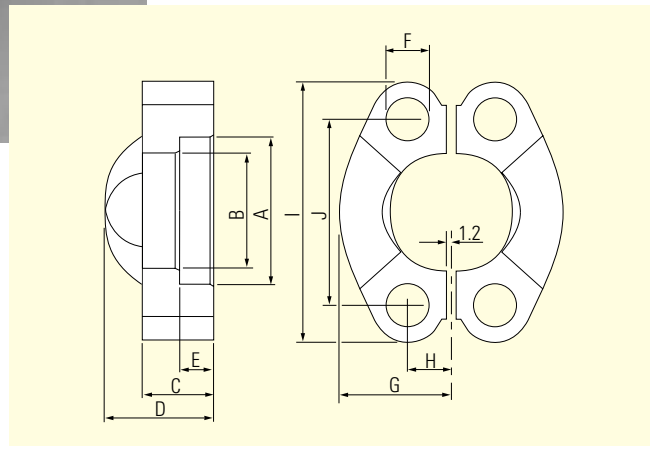


SAE SPLIT FLANGES CODE 61 & 62



Specification

- Forged steel.
- SAE code 61 and code 62.

Options

Available with bolts (metric or UNC), washers and O ring.

Series	Max working			Dimensions - mm									
	Code	bar	Nom size	A	B	C	D	E	F	G	H	I	J
LSF3-50	61	205	1/2	31.0	24.6	13	19	6.2	8.75	21.8	8.7	54	38.1
LSF3-75	61	205	3/4	38.9	32.5	14	22	6.2	10.5	24.9	11.1	65	47.6
LSF3-100	61	205	1	45.2	38.9	14	22	7.5	10.5	28.2	13.1	70	52.4
LSF3-125	61	205	1 1/4	51.6	44.0	14	22	7.5	12.0	35.3	15.1	80	58.7
LSF3-150	61	205	1 1/2	61.1	51.2	16	25	7.5	13.5	40.1	17.9	94	69.9
LSF3-200	61	205	2	72.2	63.1	16	26	9.0	13.5	47.2	21.4	102	77.8
LSF3-250	61	170	2 1/2	84.9	75.0	19	38	9.0	13.5	53.1	25.4	115	88.9
LSF3-300	61	135	3	102.4	90.9	22	41	9.0	17.0	64.3	31.0	135	106.4
LSF6-50	62	410	1/2	32.5	24.6	16	22	7.2	8.75	21.8	9.1	57	40.4
LSF6-75	62	410	3/4	42.0	32.5	19	28	8.3	10.5	29.0	11.9	72	50.8
LSF6-100	62	410	1	48.4	38.9	22	37	9.0	13.0	33.8	14.0	81	57.2
LSF6-125	62	410	1 1/4	54.8	44.5	24	40	9.8	15.0	37.6	15.8	96	66.7
LSF6-150	62	410	1 1/2	64.3	51.6	27	46	12.1	17.0	46.5	18.3	113	79.4
LSF6-200	62	410	2	80.2	67.5	37	57	12.1	21.0	55.9	22.4	134	96.8

Sample Part no:- **LSF 6 -50 M**

Series
LSF - SAE split flange

Pressure rating
3 - Code 61
6 - Code 62

Size
See table above

Bolts
Blank - None
U - UNC
M - Metric