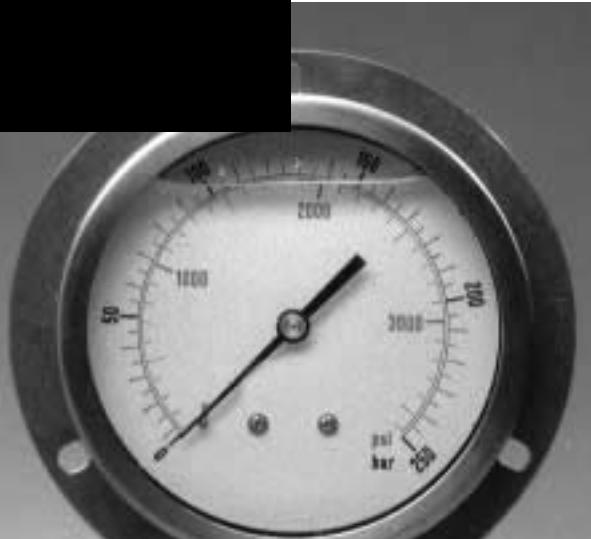


PRESSURE GAUGES 0-10 to 0-650 bar

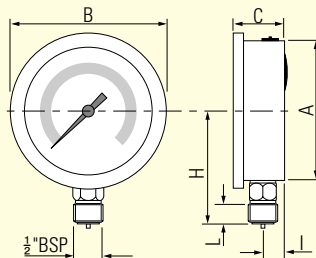


Specification

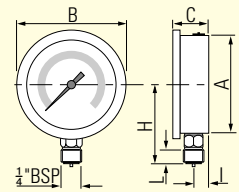
- Glycerine filled.
- High quality stainless steel case.
- Built-in damper.
- Acrylic lens.
- Phosphor bronze bourdon tube.
- Dual scale bar/psi.
- Built-in body relief valve.
- Temperature range, -15 to +65° C.

Options

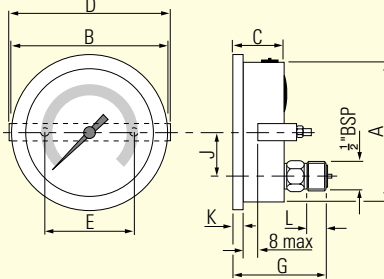
Front flanges.



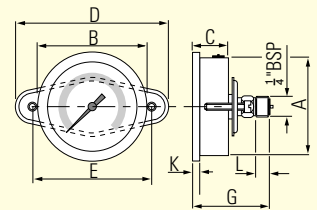
LPL100-***S



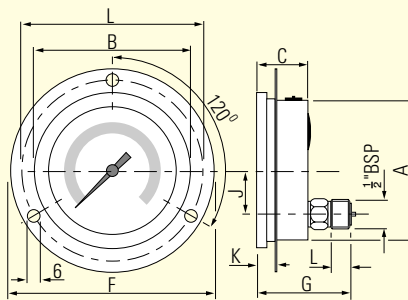
LPL63-***S/PLGA63****S



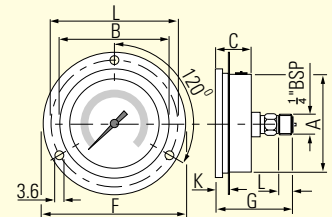
LPL100-***P



LPL63-***P/PLGA63****P



LPL100-***F



LPL63-***F/PLGA63****F

| Series | Port thread BSP | Mounting | Dimensions - mm | | | | | | | | | | | | | |
|--------|--------------------|--------------|-----------------|-----|-----|----|-----|----|---|-----|----|----|----|----|----|-----|
| | | | Weight Kg | A | B | C | D | E | F | G | H | I | J | K | L | |
| LPL63 | 1/4 | Stem | 0.25 | 63 | 68 | 30 | | | | | | 52 | 12 | | 5 | |
| LPL63 | 1/4 | Clamp | 0.25 | 63 | 68 | 30 | 69 | 45 | | 51 | | | 12 | | 5 | |
| LPL63 | 1/4 | Front flange | 0.25 | 63 | 68 | 30 | | | | 85 | 51 | | 12 | | 5 | 75 |
| LPL100 | 1/2 | Stem | 0.97 | 101 | 112 | 51 | | | | | | 87 | 16 | | 15 | |
| LPL100 | 1/2 | Clamp | 0.97 | 101 | 112 | 51 | 112 | 70 | | 86 | | | 20 | 35 | 20 | |
| LPL100 | 1/2 | Front flange | 0.97 | 101 | 112 | 51 | | | | 130 | 86 | | 20 | 35 | 15 | 116 |

BAR/PSI MODELS

Sample Part no:- **LPL 63 -250 S**

Gauge series

LPL -Liquid filled pressure gauge

Size

63 - 63 mm case
100 - 100 mm case

Indicator

S - Stem
P - Panel
F - Front flange

Pressure range

| | bar | psi |
|-----|---------|----------|
| 10 | 0 - 10 | 0 - 145 |
| 25 | 0 - 25 | 0 - 360 |
| 40 | 0 - 40 | 0 - 550 |
| 60 | 0 - 60 | 0 - 800 |
| 100 | 0 - 100 | 0 - 1450 |
| 160 | 0 - 160 | 0 - 2200 |
| 250 | 0 - 250 | 0 - 3500 |
| 400 | 0 - 400 | 0 - 5500 |
| 600 | 0 - 600 | 0 - 8000 |

PSI/kPa & Bar/MPa MODELS

| Size | | | Available pressure ranges (primary scale) | | | | | | | | | | |
|------|---------|--------------|---|------|------|-------|-------|-------|-------|-------|-------|-------|--------|
| | Scale | Mounting | Primary scale 0-10 | 0-25 | 0-60 | 0-100 | 0-160 | 0-250 | 0-300 | 0-400 | 0-500 | 0-600 | 0-1000 |
| 63 | PSI/kPa | Panel/flange | PSI | | | ✓ | | | ✓ | | ✓ | | ✓ |
| 63 | PSI/kPa | Stem | PSI | | | | ✓ | | ✓ | | ✓ | | ✓ |
| 63 | Bar/MPa | Panel/flange | Bar | ✓ | ✓ | | ✓ | ✓ | ✓ | | ✓ | | |
| 63 | Bar/MPa | Stem | Bar | ✓ | ✓ | ✓ | ✓ | ✓ | ✓ | | ✓ | ✓ | |

Sample Part no:- **PLGA 63 B -C 160 S**

Gauge series

PLGA -Liquid filled pressure gauge

Size

63 - 63 mm case

Size

B - BSP

Scale

C - PSI(primary scale)/ kPa(secondary scale)
H - Bar(primary scale)/ MPa(secondary scale)

Indicator

S - Stem
P - Panel
F - Front flange

Pressure range (Primary scale)

| | | | |
|-----|---------|------|----------|
| 10 | 0 - 10 | 400 | 0 - 400 |
| 25 | 0 - 25 | 500 | 0 - 500 |
| 60 | 0 - 60 | 600 | 0 - 600 |
| 100 | 0 - 100 | 1000 | 0 - 1000 |
| 160 | 0 - 160 | 3000 | 0 - 3000 |
| 250 | 0 - 250 | 6000 | 0 - 6000 |
| 300 | 0 - 300 | 8500 | 0 - 8500 |