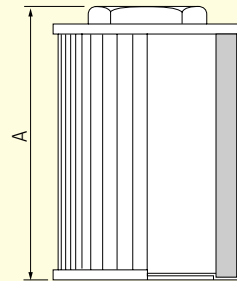
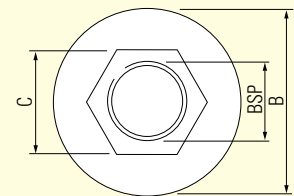
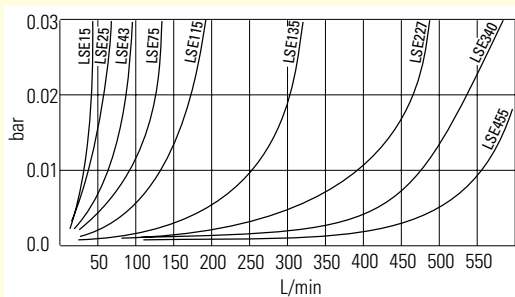


SUCTION ELEMENTS

Upto 500 L/min

Specification

- Stainless steel mesh
- Flows upto 500 L/min
- $\frac{3}{8}$ " , $\frac{1}{2}$ " , $\frac{3}{4}$ " , 1" , $1\frac{1}{2}$ " , 2" , $2\frac{1}{2}$ " & 3" BSP ports.
- For use with most hydraulic fluids.
- Maximum operating temperature 90° C.
- Cleanable.



Series Port thread	Dimensions - mm					
	BSP	Flow L/min	A	B	C	Filtration Area cm ²
LSE-08	$\frac{3}{8}$	8	62	45	26	129
LSE-15	$\frac{1}{2}$	15	107	50	26	270
LSE-25	$\frac{3}{4}$	25	107	69	34	372
LSE-43	1	50	140	69	42	480
LSE-75	$1\frac{1}{2}$	95	140	89	60	680
LSE-115	$1\frac{1}{2}$	130	200	89	60	1020
LSE-135	2	160	260	99	70	1610
LSE-227	2	227	150	132	70	2740
LSE-340	$2\frac{1}{2}$	350	212	132	86	2800
LSE-455	3	500	272	132	98	3250