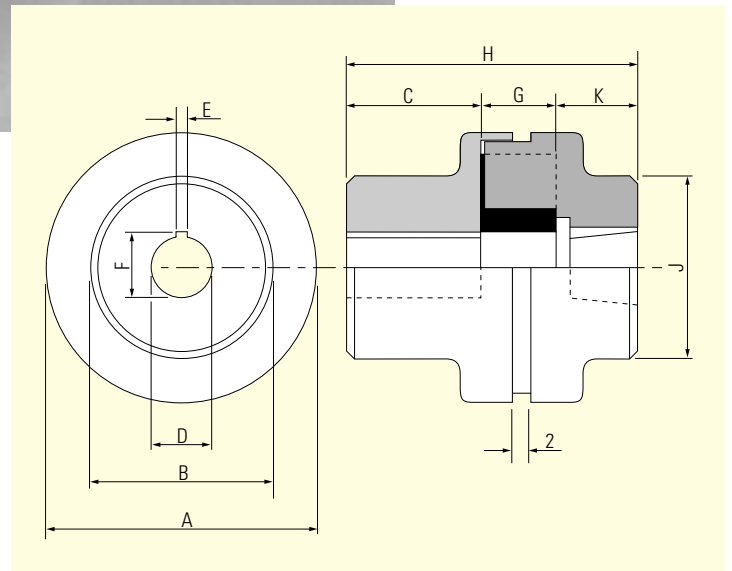


DRIVE COUPLINGS GEAR PUMP TAPERED & PARALLEL



Specification

- Aluminium construction.
- Nitrile rubber spider.
- Suitable for BS "D" frame metric motor.
- Suitable for torque upto 725 Nm.
- 2° angular misalignment allowable.
- Easy to assemble.
- Working temperature -20 to +100° C.

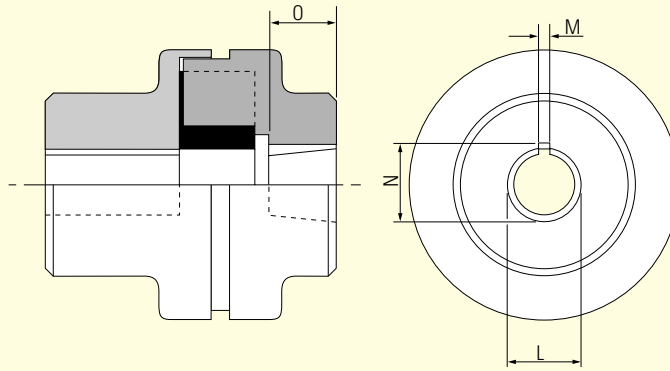
Options

All sizes upto 230Kw power transmission.

Series	Motor frame size	Motor ▲ power KW	Pump codes available	Dimensions - mm (MOTOR END)										Max Nm
				A	B	C	D	E	F	G	H	J	K	
LDC10	63	0.18	AA,AB,BA,BD,BF	48	30	19.0	11	4	12.8	16	52	30	17.0	6.86
LDC11	71	0.25(0.37)	AA,AB,BA,BD,BF	48	30	29.0	14	5	16.3	16	62	30	17.0	6.86
LDC12	80	0.55(0.75)	BA,BB,BD	48	38	54.0	19	6	21.8	16	87	30	17.0	6.86
LDC12	80	0.55(0.75)	CA,CD	65	42	47.5	19	6	21.8	18	87	34	21.5	38.2
LDC12	80	0.55(0.75)	DA,EA	86	55	48.0	19	6	21.8	20	116	55	27.0	87.3
LDC13	90	1.1(1.5)	BA,BB,BD,CA,CD	65	48	47.5	24	8	27.3	18	87	34	21.5	38.2
LDC13	90	1.1(1.5)	DA,EA	86	55	48.0	24	8	27.3	20	116	55	27.0	87.3
LDC14	100/112	2.2(3)/4	BA,BB,BD,CA,CD	65	53	57.5	28	8	31.3	18	97	34	21.5	38.2
LDC14	100/112	2.2(3)/4	EA	86	55	60.0	28	8	31.3	20	126	55	46.0	87.3
LDC14	100/112	2.2(3)/4	DA,DD,BE,CE	86	55	60.0	28	8	31.3	20	107	42	27.0	87.3
LDC16	132	5.5(7.5)	CA,CD,DA,DD,BE,CE	86	73	88.0	38	10	41.3	20	135	42	27.0	87.3
LDC16	132	5.5(7.5)	EA,CF	108	73	77.0	38	10	41.3	24	135	64	34.0	210.0
LDC17	160	11(15)	CA,CD,CF,DA,DDEA,FA,CE	108	84	110.0	42	12	45.3	24	176	64	42.0	210.0
LDC18	180	18.5(22)	CA,CD,CF,DA,DDEA,FA,CE	108	100	110.0	48	14	51.8	24	176	64	42.0	210.0
LDC19	200	30	CA,CD,CF,DA,DDEA,FA,CE	108	100	110.0	55	16	59.3	24	176	64	42.0	210.0
LDC20	225	37(45)	EA,FA	143	137	128.0	60	18	64.4	29	209	75	52.0	725.0

▲ Power figures quoted here are for 3 phase, 4 pole, 1500 rpm, they are for guidance only, please consult the motor manufacturers literature.

NOTE: Grub screws not supplied.



Pump code	Pump flange	Pump group	Dimensions - mm (PUMP END)*					
			Taper	L	M	M ₂ [†]	N	O
AA	Standard	0.5	-	7.0	2.0		8.0	10.0
AB	Marzocchi/Lamborghini	0.5	-	6.0	2.0		7.0	10.0
BA	Standard	1	1:8	9.7	2.4		10.5	15.0
BB	Marzocchi	1	1:8	13.9	3.0		15.5	18.5
BD	Bosch	ZBR	1:5	9.8	2.0		10.2	12.0
BE	Ultra	2	-	13.45	3.17		14.9	-
BF	Standard	IC	-	12.0	3.0		13.3	13.5
CA [†]	Cassappa,Ultra (Dowty),Salami Turolla,Marzocchi, GMM,Lamborghini	2	1:8	17.2	3.2	4.0	18.5	23.0
CD	Bosch	ZFR-S	1:5	16.9	3.0		17.7	19.0
CE	Ultra	2	-	17.46	4.76		19.6	-
CF	Ultra	2	-	22.2	6.35		25.0	-
DA	Standard	3	1:8	22.2	4.0		23.6	28.0
DD	Bosch	ZGR-S	1:5	25.2	5.0		26.3	29.0
EA [†]	Standard,GMM,Marzocchi	3.5	1:8	25.6	4.76	5.0	27.8	35.0
FA [†]	Standard,Marzocchi	4	1:8	33.3	6.35	7.0	35.5	45.0

* **NOTE:** Many pump manufacturers offer a variety of shaft sizes. Please check the dimensions above against the pump.
[†] Couplings thus marked have two key ways in the pump end.

Sample Part no:- **LDC 10 - BA**

Series

LDC - Drive coupling

Motor size

- 10 - Frame size 63
- 11 - Frame size 71
- 12 - Frame size 80
- 13 - Frame size 90
- 14 - Frame size 100 & 112
- 16 - Frame size 132
- 17 - Frame size 160 & 180
- 19 - Frame size 200
- 20 - Frame size 225

Pump shaft type

- AA - Standard
- AB - Marzocchi,Lamborghini
- BA - Standard
- BB - Marzocchi
- BD - Bosch
- BE - Ultra
- BF - Standard
- CA - Cassappa,Ultra(Dowty),Salami
- Turolla,Marzocchi,
- GMM,Lamborghini
- CD - Bosch
- CE - Ultra
- CF - Ultra (Dowty)
- DA - Standard
- DD - Bosch
- EA - Standard,Marzocchi,GMM
- FA - Standard,Marzocchi