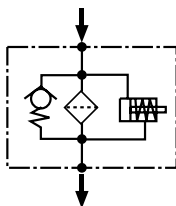
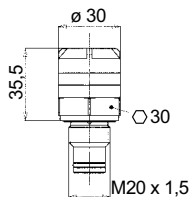


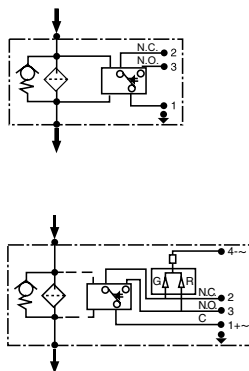
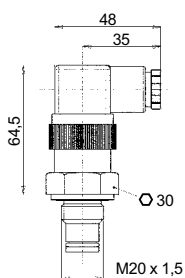
CLOGGING INDICATORS Differential

SERIES 5C



Series 5C:
differential visual indicator
200 kPa (2 bar)

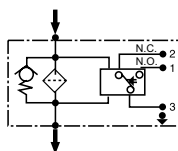
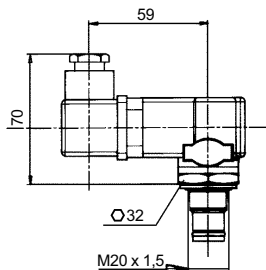
SERIES 6C & SERIES 7C



Series 6C (series 7C with LED - 24V):
differential electrical indicator
200 kPa (2 bar)

Connector according to DIN 43650.
Protection IP65 according to DIN 40050.
SPDT: C.A. 125-250 V
> max resistive or inductive load 1A;
C.C. 14-30 V
> max resistive or inductive load 4-3 A resp.

SERIES T1



Series T1:
differential electrical indicator
with thermostat 30°C,
200 kPa (2 bar)

Connector according to DIN 43650.
Protection IP65 according to DIN 40050.
SPDT: C.A. 125-250 V
> max resistive or inductive load 1A;
C.C. 14-30 V
> max resistive or inductive load 4-3 A resp.

SERIES 71 AVAILABLE ONLY ON REQUEST - SEE SUMMING UP OF THE CLOGGING INDICATORS

Recommended tightening torque 90 Nm

FILTER ELEMENT

	A	B	C	kg	Area (cm ²)	
					Media F+	Media C+
ERD11	52	28/24	70	0,10	310	380
ERD21	70	34	85	0,20	620	990
ERD31	70	34	130	0,25	1.000	1.600
ERD41	99	51	211	0,70	3.800	4.280
ERD51	130	74	251	1,50	7.930	8.350
ERD61	130	74/85	500	2,00	16.720	17.600

