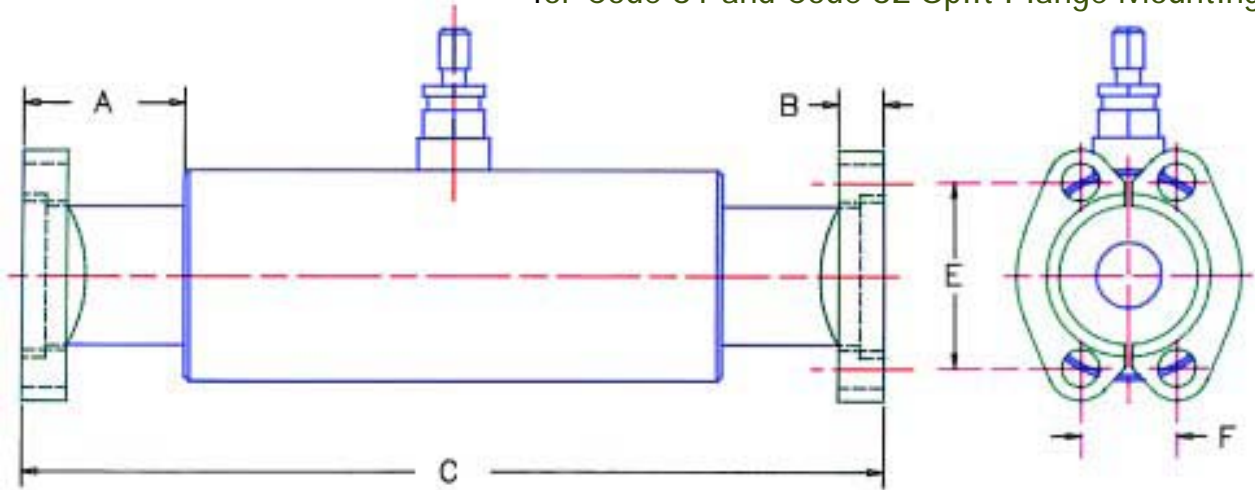


## 3000 psi Suppressors

for Code 61 and Code 62 Split Flange Mountings



### 3000 psi Suppressors for Code 61 and Code 62 Split Flange

MODEL NUMBER	FLANGE SIZE	CODE 61 FLANGE DIMENSIONS					CODE 62 FLANGE DIMENSIONS*				
		A	B	C	E	F	A	B	C	E	F
WM 3081 - 12 SF	0.75	1.75	.56	10.12	1.875	0.875	2.000	.75	10.620	2.000	0.938
WM 3081 - 16 SF	1.00	1.75	.62	10.12	2.062	1.030	2.000	.94	10.620	2.250	1.094
WM 3081 - 20 SF	1.25	2	.56	10.62	2.312	1.188	2.250	1.06	11.120	2.625	1.250
WM 3138 - 20 SF	1.25	2.25	.56	13.12	2.312	1.188	2.250	1.06	13.125	2.625	1.250
WM 3138 - 24 SF	1.50	2.25	.62	13.12	2.750	1.406	2.500	1.19	13.625	3.125	1.438
WM 3138 - 32 SF	2.00	2.38	.62	13.38	3.062	1.688	2.620	1.44	13.875	3.812	1.750
WM 31875 - 32 SF	2.00	2.38	.62	15.00	3.062	1.688	none	none	none	none	none
WM 31875 - 40 SF**	2.50	2.875	.75	16.00	3.500	2.000	none	none	none	none	none
WM 31875 - 48 SF***	3.00	3.25	.88	16.75	4.188	2.438	none	none	none	none	none

Split flanges are not included with the Suppressor. Flanges should be ordered as a separate item.

\*When ordering Suppressors with code 62 flanges add an X after model number. (Example: WM3138-20SF<sub>X</sub>)

When using code 62 flanges do not exceed 3000 psi pressure rating of the Suppressor.

\*\*Max. pressure rating for this flange is 2500 psi.

\*\*\*Max. pressure rating for this flange is 2000 psi.



The Suppressor ends are machined to mate with the standard SAE J518 - code 61 split flange.

The Suppressor is shipped either with or without the split flanges. The Split Flange Suppressor is shipped with an "O" ring face on one flange end and a blank face on the other flange end. This is done so the Suppressor can be inserted between any existing flange connection. When ordering, specify if you want the split flanges shipped with the Sup-

pressor. Specify the system operating pressure. The Suppressor can be shipped with a nitrogen pre-charge to 50% of the system pressure. Suppressors can also be ordered with any combination of ends, such as a split flange one end and a straight thread on the opposite end. When ordering special combinations, specify the type of connection for each end.