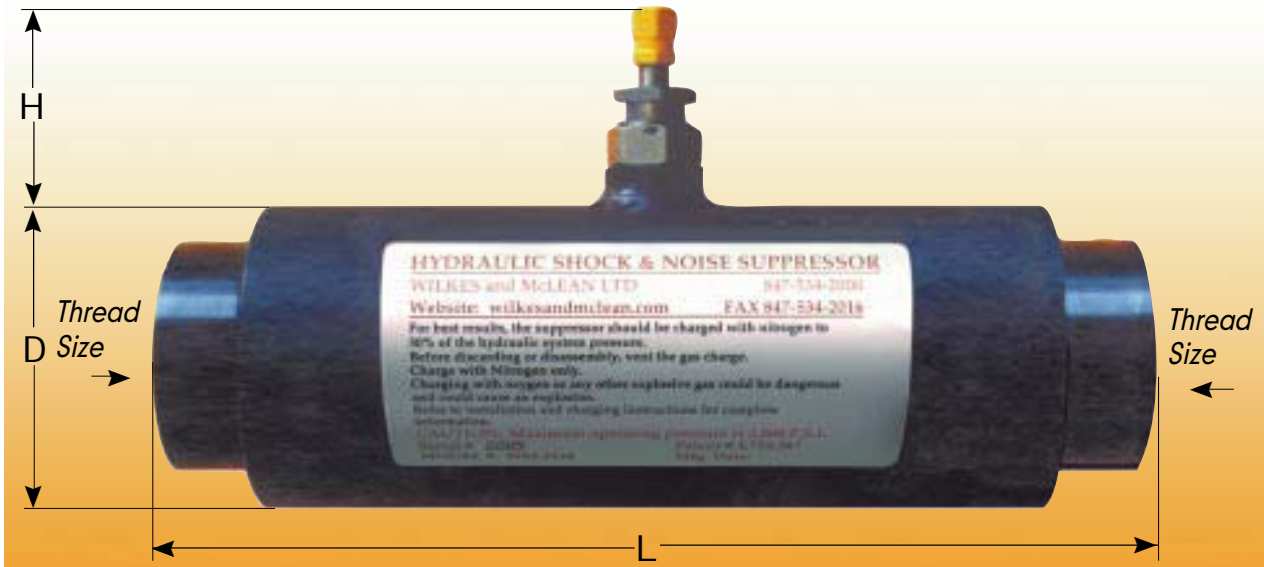


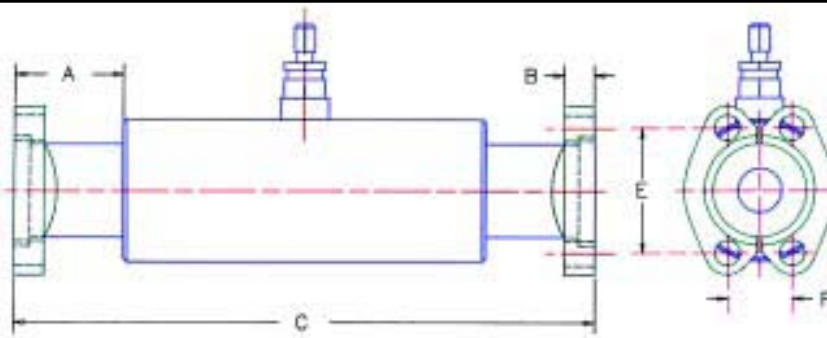
5000 psi Suppressors

for Straight Thread and Split Flange Connections



5000 psi Suppressors for Straight Thread Connections

MODEL NUMBER	FOR TUBE SIZE	THREAD IN SUPPRESSOR	MAX. FLOW RATE	DIMENSIONS			WEIGHT LBS.
				D	H	L	
WM 5081 - 12	0.750	1 1/16 - 12	49 G.P.M.	3.50	1	8.13	16
WM 5081 - 14	0.875	1 3/16 - 12					
WM 5081 - 16	1.000	1 5/16 - 12					
WM 5081 - 20	1.250	1 5/8 - 12					
WM 5138 - 16	1.000	1 5/16 - 12	90 G.P.M.	5.0	1	8.88	36
WM 5138 - 20	1.250	1 5/8 - 12					
WM 5138 - 24	1.500	1 7/8 - 12					



The Suppressor is shipped either with or without the split flanges. When ordering, specify if you want the split flanges shipped with the Suppressor. The Split Flange Suppressor is shipped with an "O" ring face on one flange end and a blank face on the other flange end. This is done so the Suppressor can be inserted between any existing flange connection.

5000 psi Suppressors for SAE Code 62 Split Flanges

MODEL NUMBER	FLANGE SIZE	DIMENSIONS				
		A	B	C	E	F
WM 5081 - 12 SFX	0.75	2.00	.75	10.62	2.000	0.875
WM 5081 - 16 SFX	1.00	2.00	.94	10.62	2.250	1.030
WM 5081 - 20 SFX	1.25	2.25	.75	11.12	2.625	1.188
WM 5138 - 20 SFX	1.25	2.25	.75	13.88	2.625	1.188
WM 5138 - 24 SFX	1.50	2.50	.75	13.88	3.125	1.406
WM 5138 - 32 SFX	2.00	2.62	.75	14.12	3.125	1.688

Be sure to specify the system operating pressure because the Suppressor can be shipped with a nitrogen precharge to 50% of the system pressure. Suppressors can also be ordered with any combination of ends, such as a split flange one end and a straight thread on the opposite end. When ordering special combination of end connections, specify the type of connection for each end.